

[View this email in your browser](#)

Visions from the Heart with Paul & Neelam of Shamanic Vision August, 2020

The Sanctity of our relationship with Self, Others and Spirit



The changes of the World that are taking place are the death knell of Patriarchy. What will emerge when we exit the chaos is Balance.

[Subscribe](#)[Past Issues](#)[Translate ▼](#)

As many of you know, Balance is a primary aspect of these Teachings. And Balance is critical in this time of Great Change.

Now, as Patriarchy yells and screams and attempts to dig in his heels in an effort to hold back the evolution of humanity, there are many men who follow a higher, more profound Calling. That is the Call of the Sacred Masculine.

A vital understanding though of the Sacred Masculine is that it is not limited by gender. Both women and men and also the third sex...we all have both feminine and masculine aspects in us. And each of us should strive for an understanding of this. We all need to seek Balance and harmony between both sides of our inner polarity so we may rise to the occasion during this evolving time.

In this issue, we focus on The Rise of the Sacred Masculine that is found in us all.

This leads me to so Food for Thought...

<><><>

Look at this image:

Subscribe

Past Issues

Translate ▼



** Regarding the Masculine, on which side of the spectrum to you currently lean towards?

** Regarding the feminine, on which side of the spectrum to you currently lean towards?

** How balanced are you between both Masculine and Feminine?

** Who was your most significant influence of the Masculine as a child?

** How balanced were they in their Masculine journey when you knew them?

** What is the greatest lesson you ever received from the Masculine?

** Have you shared this lesson with others?

** What part of your Masculine side needs healing?

[Subscribe](#)[Past Issues](#)[Translate ▼](#)

** What is the strongest Masculine aspect that you currently present to the World?

** Is it a positive aspect or a not so positive aspect of the Masculine?

** How is this offered in a Good Way?

There are no right or wrong answers to these questions. Your answers belong to you.

Strive to BE the best you that you can BE. Embrace your Sacred Masculine, regardless of your gender or sexual orientation.

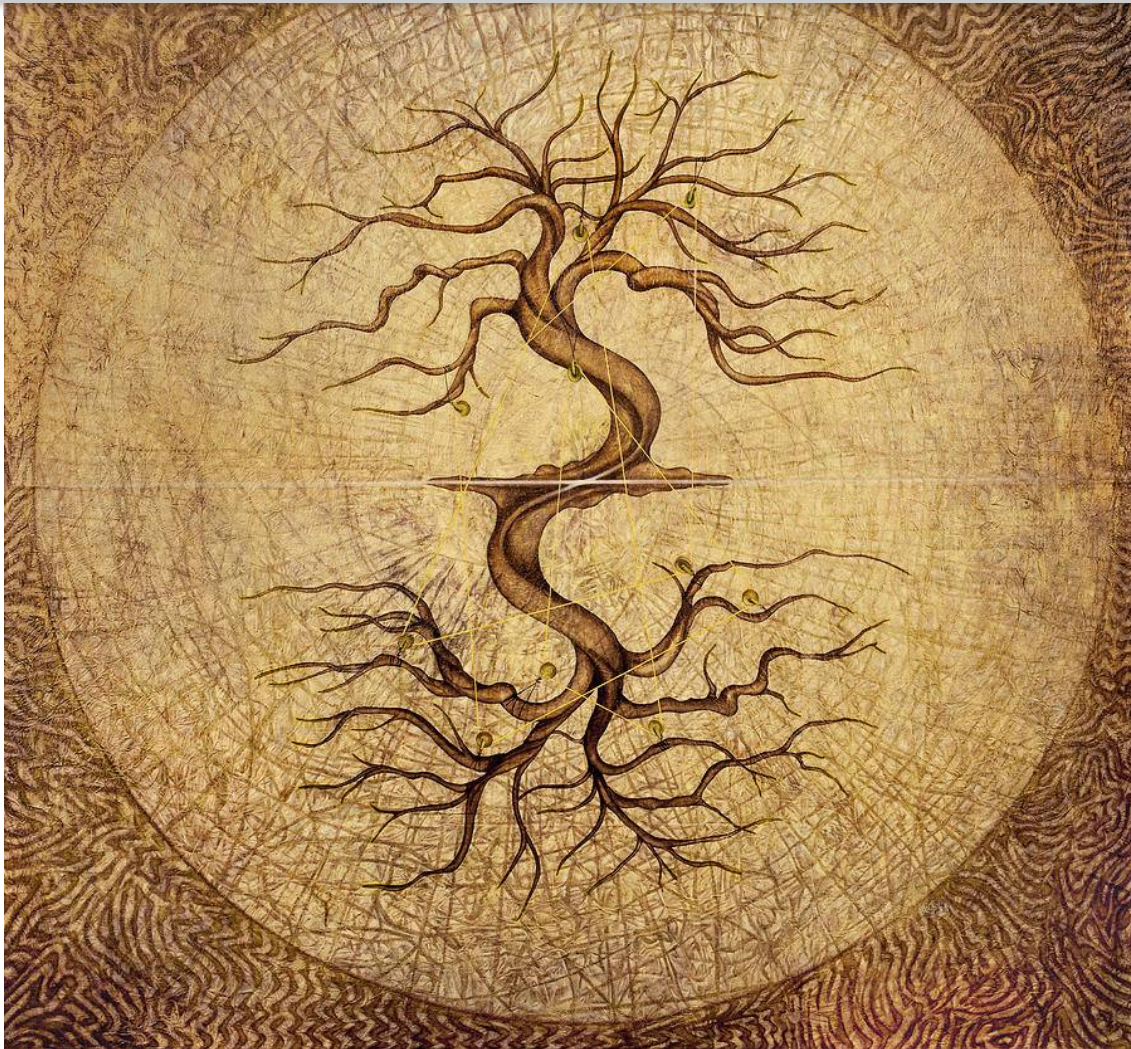
Always seek Balance.

A-ho!

* * *

Here is a recent Church of the Wheel recording on Honoring Fathers. This is a potent conversation on Men in our lives, from development to today, of the discovery of the Sacred Masculine and of Healing our masculine wounds.

<https://wp.me/pb3VB1-9u>

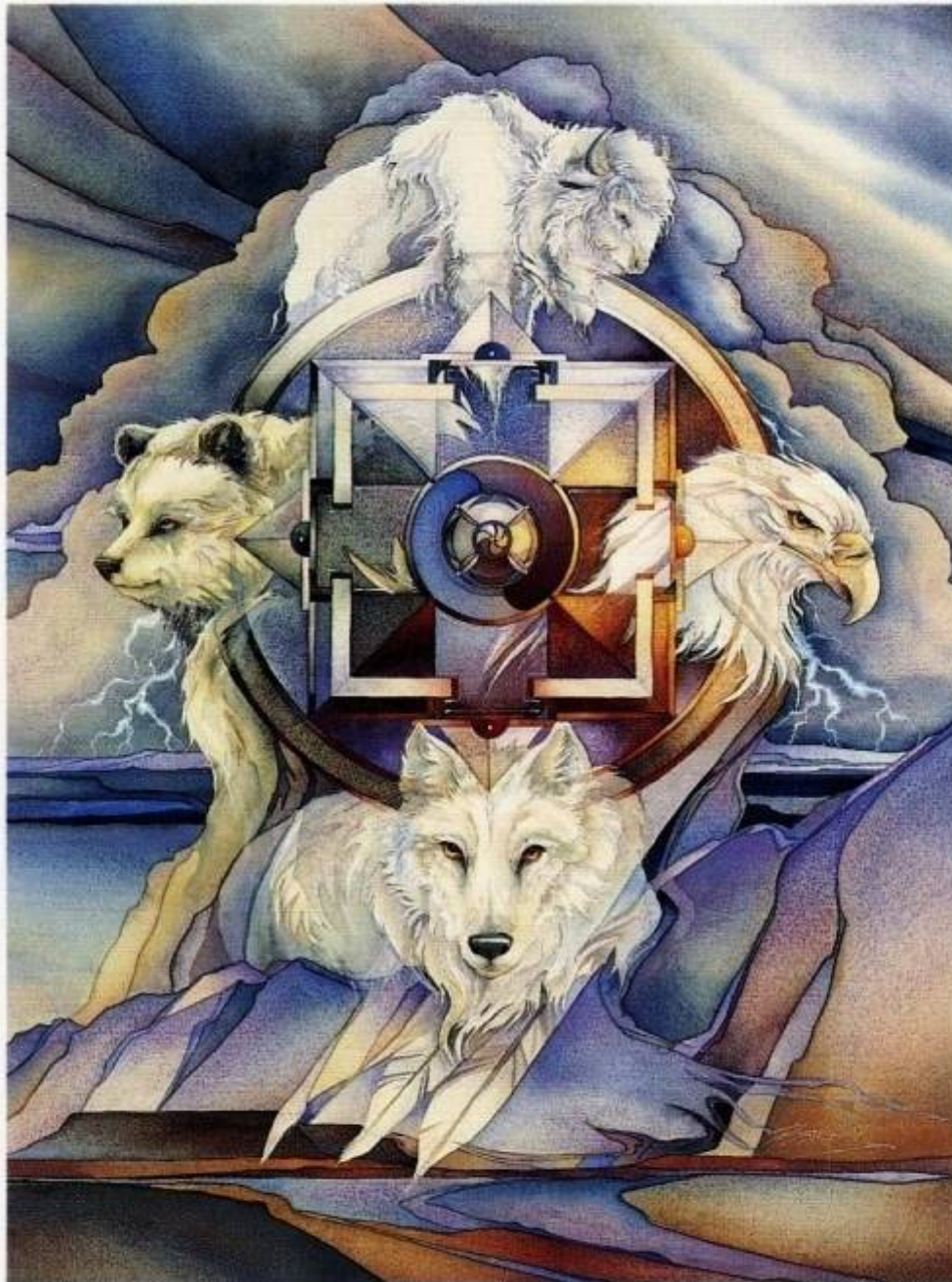


Quote of the Month

**By Chirs Saade, in Evolutionary Love Relationships
written with Andrew Harvey**

- I. Honor and champion the authentic nature of your unique self and the authentic nature of the unique self of others.
- II. Honor and champion the paradoxes of joy and grief, success and defeats, gain and loss.
- III. Honor and champion the deepest desires of your heart and the deepest desires of the heart of others.
- IV. Honor and champion others in their idiosyncratic spirit and advocate their differences.

VI. Passionately celebrate the process of co-creation and the journey toward authenticity and solidarity.



MEDICINE WHEEL OF THE FOUR DIRECTIONS.
"THERE IS MORE THAN ONE DOOR." *Paul & Neelam*

[Subscribe](#)[Past Issues](#)[Translate ▼](#)

"The wounds of the masculine effect us all, regardless of our gender."

<https://wp.me/p3BqZT-1bR>

<><><>

Church of the Wheel library of recorded Gatherings:

Every Sunday, Paul opens Sacred Space and conducts online Gatherings with the Church of the Wheel.

The sessions are recorded and then archived in an online library that is found here.

<https://bit.ly/3c1ynQh>

Each Gathering has a specific Themes. The recordings to date include:

- ** Thumbprints
- ** The River of Life
- ** The Trees(s) of Life
- ** The Open Canvas
- ** With a Song in my Heart
- ** Where are you?
- ** Honoring Fathers
- ** Walking in Beauty
- ** The Stone of Self
- ** BEing Open and Curious

Episodes average 45 minutes in length and all available for playback and download.

You may visit them here: <https://bit.ly/3c1ynQh>

<><><>

Church of the Wheel Gathering every Sunday!

Coming this Sunday, August 2 at 9:30 a.m. MDT (9:00 p.m. IST)

Theme of the week: UFO's

Registration link: <https://bit.ly/2TwvO2f>

Please bookmark the link the registration link changes every week.

[Subscribe](#)[Past Issues](#)[Translate ▼](#)

Power Animal of the Month: Zebra!

Zebra is a beautiful Power Animal that brings the Medicine of which we speak of this month:

- ** Balance
 - ** Seeing in black and white
 - ** Clarity without filters
 - ** Power
 - ** Sureness of path
 - ** Maintaining the individual within the herd
-

[Subscribe](#)
[Past Issues](#)
[Translate ▼](#)


Shamanic Vision Program Schedule through the first part of 2021

Healing the Father Wound:

Sundays, August 23 and 30th.

Online Zoom 9:30 a.m. to 6 p.m. both days (with breaks and lunch)

<https://wp.me/p3BqZT-1bR>

~ ~ ~

Ancestral Healing

Saturdays & Sundays

September 12, 13, 19, 20th, 2020.

Online Zoom, Live teaching, 4-7 p.m. IST

<https://wp.me/P3BqZT-sH>

The Empowered Woman

Saturday and Sunday, October 17 & 18th

Online Zoom 9:30 a.m. to 6 p.m. both days (with breaks and lunch)

<https://wp.me/P3BqZT-ql>

~ ~ ~

Foundation of Shamanic Practices

Four sessions on October 17, 18, 24 & 25.

4:30 to 8 a.m. Mountain Time

[Subscribe](#)[Past Issues](#)[Translate ▼](#)

~ ~ ~

Advanced Shamanism

Four sessions on November 28 & 29th, December 5 & 6th.

4:30 to 8 a.m. Mountain Time

Online (Zoom), Live from USA.

<https://wp.me/P3BqZT-1cw>

~ ~ ~

The River of Life with author Paul Hinsberger

January 16, 17, 23 & 24, 2021

4:30 to 8 a.m. Mountain Time

<https://wp.me/P3BqZT-1c4>

~ ~ ~

Shamanic Counseling Training with Paul Hinsberger

Coming in March, 2021

An intensive, 6 month program with weekly Gatherings.

<https://wp.me/P3BqZT-1cn>

~ ~ ~

Visit us here for our calendar of events:

Calendar of Courses until March 2021

[Subscribe](#)[Past Issues](#)[Translate ▼](#)

"Life leads us to face many mirrors. Some of these mirrors are dark and show us an illusion. Some mirrors are painful in their honesty.

Discern which mirror you are looking at. Do this many times during the day.

Do not do this to ensure how you look to the outside world. Rather, do it so you know how you look in your Inner World."

Red Cloud



Copyright © 2020 Shamanic Vision, All rights reserved.

Want to change how you receive these emails?
You can [update your preferences](#) or [unsubscribe from this list](#).

